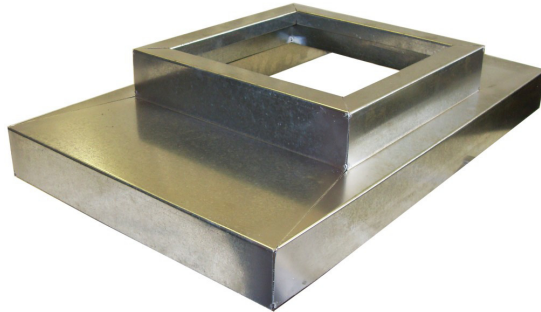




## ROOF CURB ADAPTER

**MODELS:**  
**LS-CA (STEEL)**  
**LA-CA (ALUMINUM)**



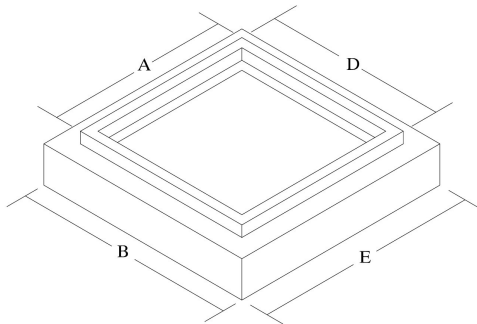
### APPLICATION

The LS-CA/LA-CA are roof curb adapters. The extended base models mount between the fan and roof curb. LS-CA model consists of 16 gauge galvanized steel. LA-CA model consists of 0.063 thick aluminum alloy 3003-H14. Roof curb adapters mount between the fan and the roof curb and provide an additional 6 inches (152 mm) of height.

### STANDARD CONSTRUCTION

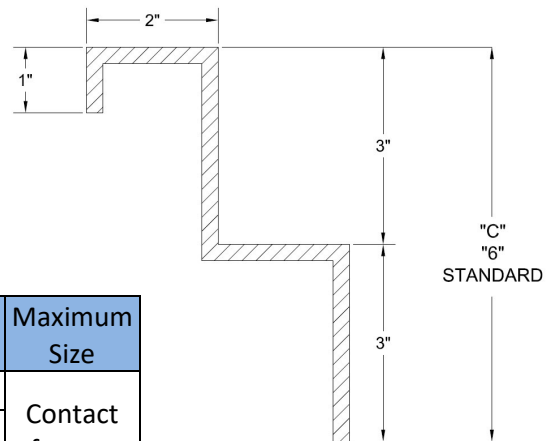
Fabricated using 16 Ga. galvanized steel  
3 inch rise and 3inch land area  
Mill finish is standard

Note: use "D" & "E" dim's for rectangular Curbs



Side	Minimum Size	Maximum Size
A	6"	Contact factory
B	6"	
C	5"	

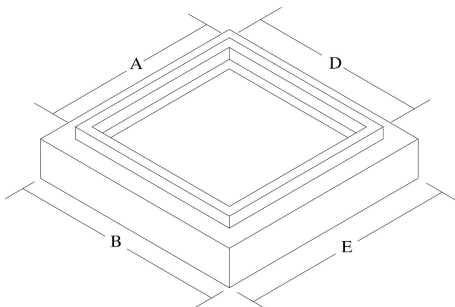
### LS-CA STEEL CURB ADAPTER



### STANDARD CONSTRUCTION

Fabricated using 0.063 thick aluminum alloy 3003-H14  
3 inch rise and 3inch land area  
Mill finish is standard

Note: use "D" & "E" dim's for rectangular Curbs



Side	Minimum Size	Maximum Size
A	6"	Contact factory
B	6"	
C	5"	

### LA-CA ALUMINUM CURB ADAPTER

