



BACKDRAFT DAMPER

OPERATION OF OPTIONAL BLADE COUNTERWEIGHTS:

Figure 1

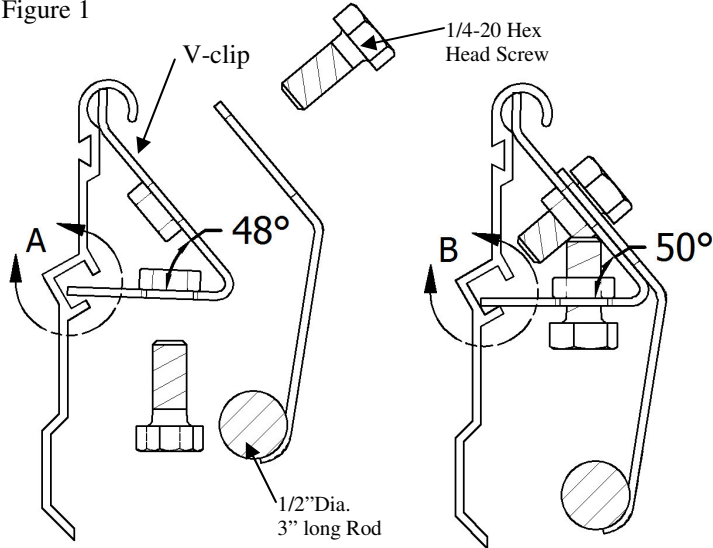


Figure 1 shows how the location of the rod can increase the weight of the blade. As a result, the damper blade stays close.

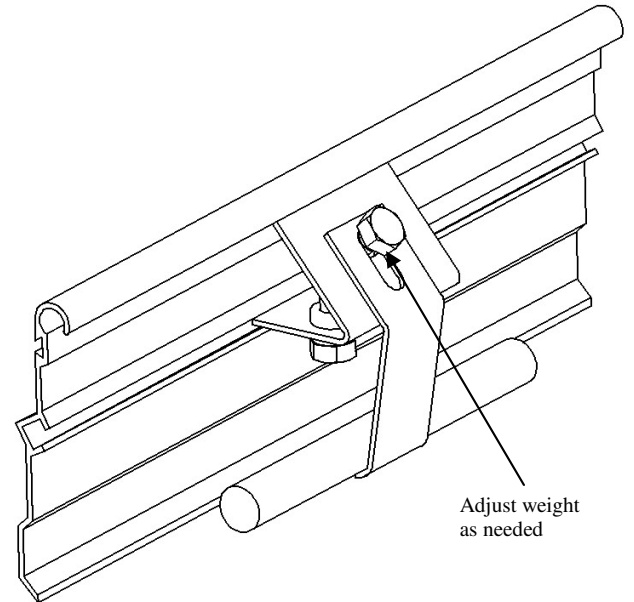


Figure 2

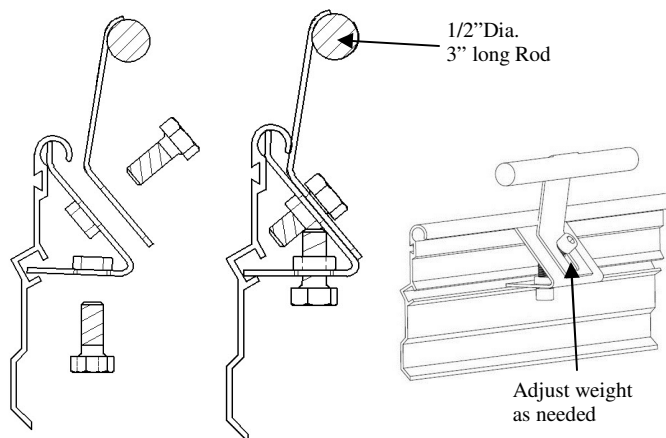


Figure 2 shows the rod on the opposite direction. At this location, the rod helps to increase the gravity instead of the blade's weight. As a result, the damper blade stays open.

Figure 3

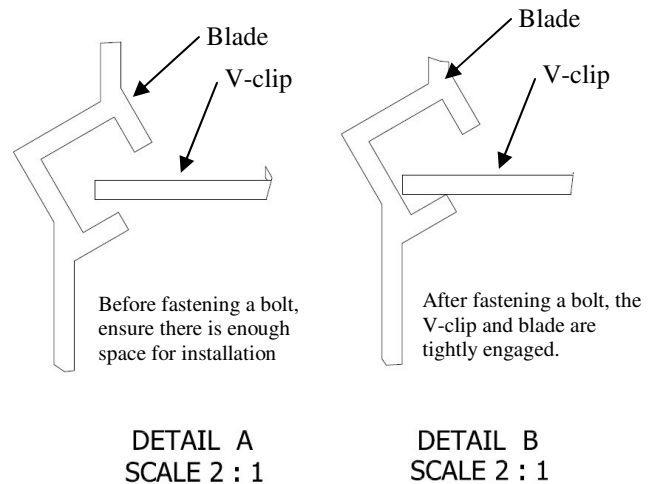


Figure 3 illustrates how the V-clip and blade are engaged.