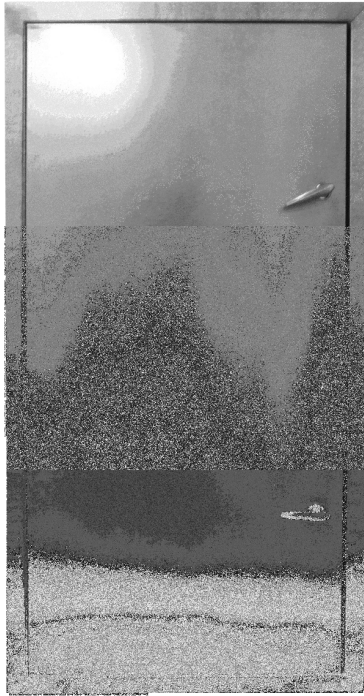




**ACCESS DOORS**



**MODEL:**  
**90-WI**  
**95-WI**

**Standard construction**

**Frame:** 16 Ga. galvanized steel  
**Door panel:** 20 Ga. galvanized steel  
Double wall door

- Full length plated continuous vertical hinge
- 1/2" wide neoprene closed cell door to frame gasketing
- 2 exterior latches with interior handles
- Min. size 12"x 12" (W x H)
- Max. size 30" x 72" (W x H)

**OPTIONS**

- 316 stainless steel construction
- 12" x 12" view port
- Extra latches
- Keyed latches
- 2" in thickness

