



EXTRUDED ALUMINUM LOUVER

MODEL: 4-SRCF

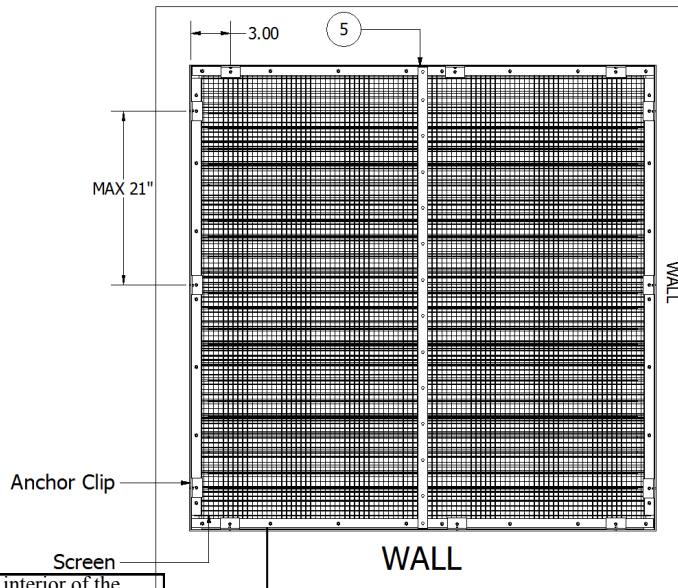
IMPACT RESISTANT LOUVER

Miami Dade Approved-NOA No. 13-0207.04

INSTALLATION INSTRUCTION

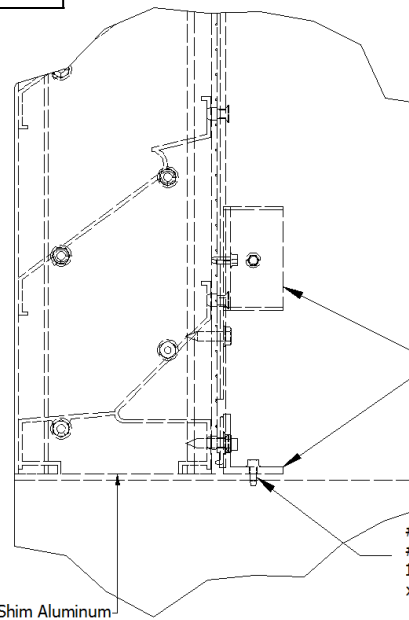
APPLICATION

The 4-SRCF Louver is a Miami-Dade Qualified and Florida Product Approved. It must be installed in accordance with the installation instruction shown below. 4-SRCF is structurally calculated to withstand positive and negative wind-loads up to ± 100 PSF.



The screen secures to the interior of the frame using snap-fit extruded aluminum stops and #10x3/4" long self-tapping hex head screws. The screws located at the head, sill and jambs are located at each end and spaced 7" on center

Back view of the 4-SRCF installs into the wall

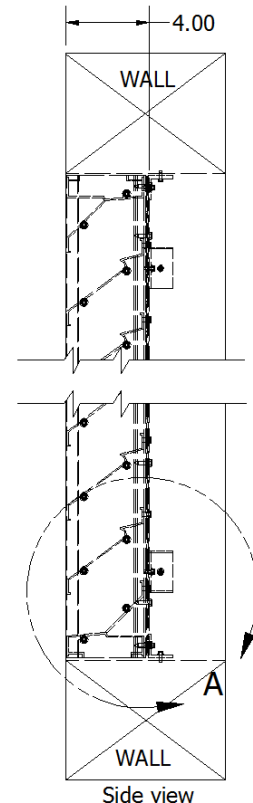


DETAIL A

FASTENER QUANTITIES

MAX INSIDE DIMENSION L x W	NO. FASTENERS - SUBSTRATE TYPE		
	WOOD	CONC.	STEEL
18"x18"	8	8	8
24"x24"	8	8	8
30"x30"	12	12	12
36"x36"	12	12	12
42"x42"	12	12	12
48"x48"	12	12	12

FASTENER SPACING: 3" FROM CORNERS
MAX 21" O.C.



MIAMI-DADE COUNTY
APPROVED