

AIR CONTROL DAMPER

MODELS:
AC10 (PARALLEL BLADE)
AC20 (OPPOSED BLADE)

AMCA Certified Leakage Data

AC10/AC20	Leakage Class			
Damper Width	1in.wg	4in.wg	6in.wg	8in.wg
48"	I	II	II	II

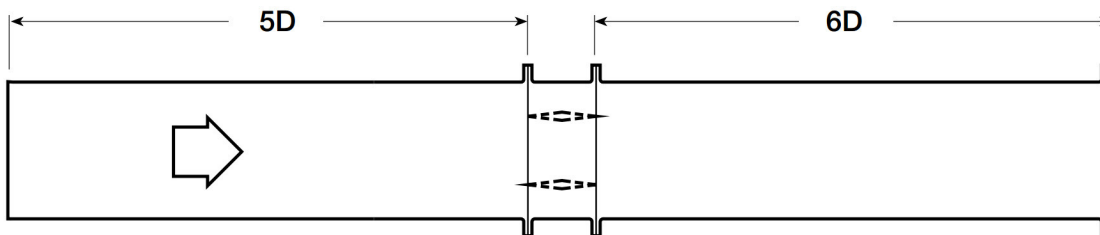
Torque: 6.0 in.lb/sq.ft applied to close and seat the damper.



Lloyd Industries certifies that the AC10-AF and AC20-AF herein are licensed to bear the AMCA Seal. The ratings shown are based on the tests and procedures performed in accordance with AMCA publication 511 and comply with the requirements of the AMCA Certified Ratings Program. The AMCA International Certified Rating Seal applies to Air Performance and Air Leakage.

AMCA Certified Pressure Drop Data

AMCA 5.3



12"x12"	
Velocity (fpm)	Pressure Drop (in. Wg.)
500	0.037
1000	0.170
1500	0.320
2000	0.700

36"x36"	
Velocity (FPM)	Pressure Drop (in. Wg.)
500	0.004
1000	0.023
1500	0.041
2000	0.090

24"x24"	
Velocity (FPM)	Pressure Drop (in. Wg.)
500	0.008
1000	0.040
1500	0.090
2000	0.170

12"x48"	
Velocity (fpm)	Pressure Drop (in. Wg.)
500	0.010
1000	0.042
1500	0.080
2000	0.170